

CRANE MARINE CONTRACTOR LLC

VOLGAR

ОСК

ОБЪЕДИНЕННАЯ
СУДОСТРОИТЕЛЬНАЯ
КОРПОРАЦИЯ

CMC[®]
HEAVYLIFT

CASPIAN ENERGY
GROUP



TECHNICAL CHARACTERISTICS

Year and Place of build:
2008 / Astrakhan

Flag:
Russia

Port of registry:
Astrakhan

Ship's type:
Sheerleg non-propelled floating crane

Classification society and class:
Russian Maritime Register of Shipping
KE * R2-RSN floating crane, Ice 1

GMDSS area:
A1, A2, A3

Gross tonnage:
5960

Length / Beam / Height / Depth, m:
80,08 / 34,12 / 95,0 / 7,0

Draught light / loaded, m:
2,2 / 4,04

Positioning system:
8 winches with pulling force of 80 t each.
Operating by central station located in
superstructure.

Crew:
24 pers.

Tank capacities:
Diesel oil – 73 t
Lub oil - 4,5 t
Fresh water - 43 t

Lifting Appliance:
Main Hoist I and II (Port + Starboard) - 1550 t
Main Hoist I (Port + Starboard) - 1000 t
Main Hoist II (Port + Starboard) – 700 t
Auxiliary Hoist (Port + Starboard) - 250 t
Auxiliary Hoist (Port + Starboard) - 125 t
Deck Cranes «КЭГ 8018» (Port or Starboard) - 8 t
(outreach min/max - 2,5 -18 m)

Anchor Appliance:
Stern: Hall's Anchor 8000 kg - 2 pcs.
Chain 78 mm - Port - 300 m/ Starboard - 325 m
Bow: Hall's Anchor 3000 kg - 2 pcs.
Steel wire Ø 39,5 mm - 280 m

Mooring Appliance:
4 bow Winches «ЛЭ80» (pulling force 20 t)
steel wire Ø 39,5 mm - 280 m
2 bow and 2 Stern Capstans «Ш6»
(pulling force 8 t)



ISO 9001
BUREAU VERITAS
Certification



60, Admiral Nakhimov Street, Astrakhan, Russia, 414018

Phone: +7 (8512) 290-038 Fax: +7 (8512) 610-557

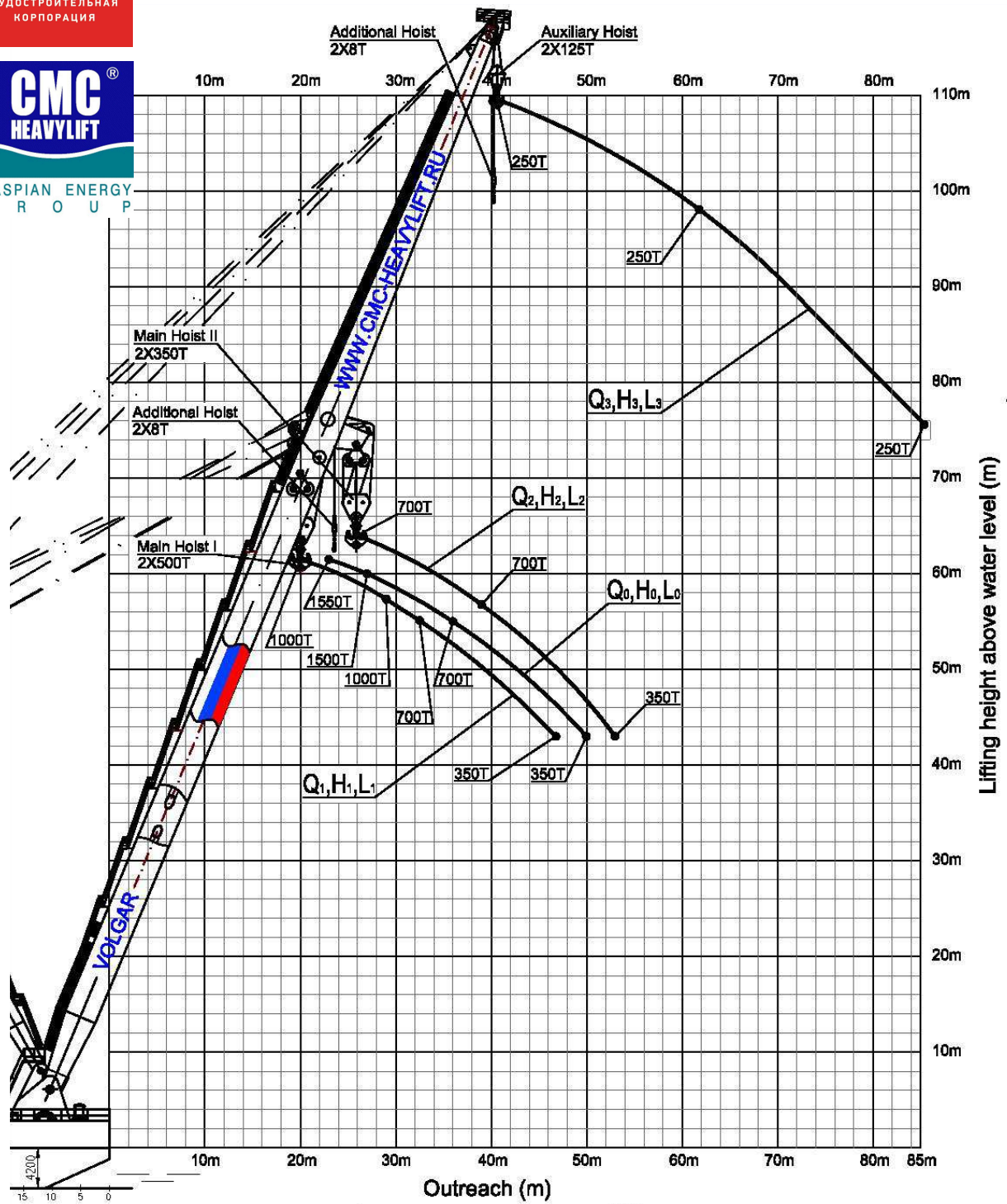
info@cmc-heavylift.ru

www.cmc-heavylift.ru

CRANE MARINE CONTRACTOR LLC



VOLGAR



Q₀, H₀, L₀ - Max. load and outreach main hoist I & II;
 Q₁, H₁, L₁ - Max. load and outreach main hoist I;
 Q₂, H₂, L₂ - Max. load and outreach main hoist II;
 Q₃, H₃, L₃ - Max. load and outreach auxiliary hoist;



60, Admiral Nakhimov Street, Astrakhan, Russia, 414018
 Phone: +7 (8512) 290-038 Fax: +7 (8512) 610-557
info@cmc-heavylift.ru
www.cmc-heavylift.ru